



#MASKS4ALL

Love
Struck



WOODSTOCK.CAN

#SEW4SAFETY #MASKS4ALL

CALLING ON OUR #SEWSISTAS & BROTHERS TO HELP OUR NATION FLATTEN THE CURVE

There is already a severe shortage of face masks resulting in many essential service workers operating without any kind of face mask protection. While a fabric mask is not the best solution, in the absence of surgical-grade masks, a fabric mask is far better than nothing. With the virus potentially escalating in the coming weeks, the need for fabric face masks becomes more and more important. If you have access to a sewing machine and have some material on hand (even spare bed sheets will do), please be part of the solution.

HERE'S HOW

START YOUR COMMUNITY GROUP AND GATHER THOSE SEWING SISTA'S!

STEP 1: Start collecting resources, materials, volunteers and drivers.

STEP 2: PICK ONE OF OUR 3 PATTERNS AND GET GOING!

STEP 3: Ask for donations from your community using our designs.

STEP 4: Dust off your sewing machine. If you don't have a sewing machine consider doing the cutwork and then sending it to one of our volunteers to sew.

STEP 5: Arrange pick or delivery with your Community leader. That way we can ensure the right safety measures get taken to clean them and distribute them.

(DON'T HAVE A LEADER IN YOUR COMMUNITY? BE THE LEADER AND START THE MOVEMENT)

STEP 6: Share this with a Sister with some sexy sewing skills!

ALL GROUPS NEED TO ENSURE THERE MASKS ARE WASHED
AND THE PERSON RECEIVING IT WELL INFORMED ABOUT ALL THE RISKS OF COVID_19.
THIS IS A COMMUNITY PROJECT AND PRECAUTION TO FLATTEN THE CURVE.

~~SOCIAL~~ PHYSICAL DISTANCING. SOCIAL SOLIDARITY



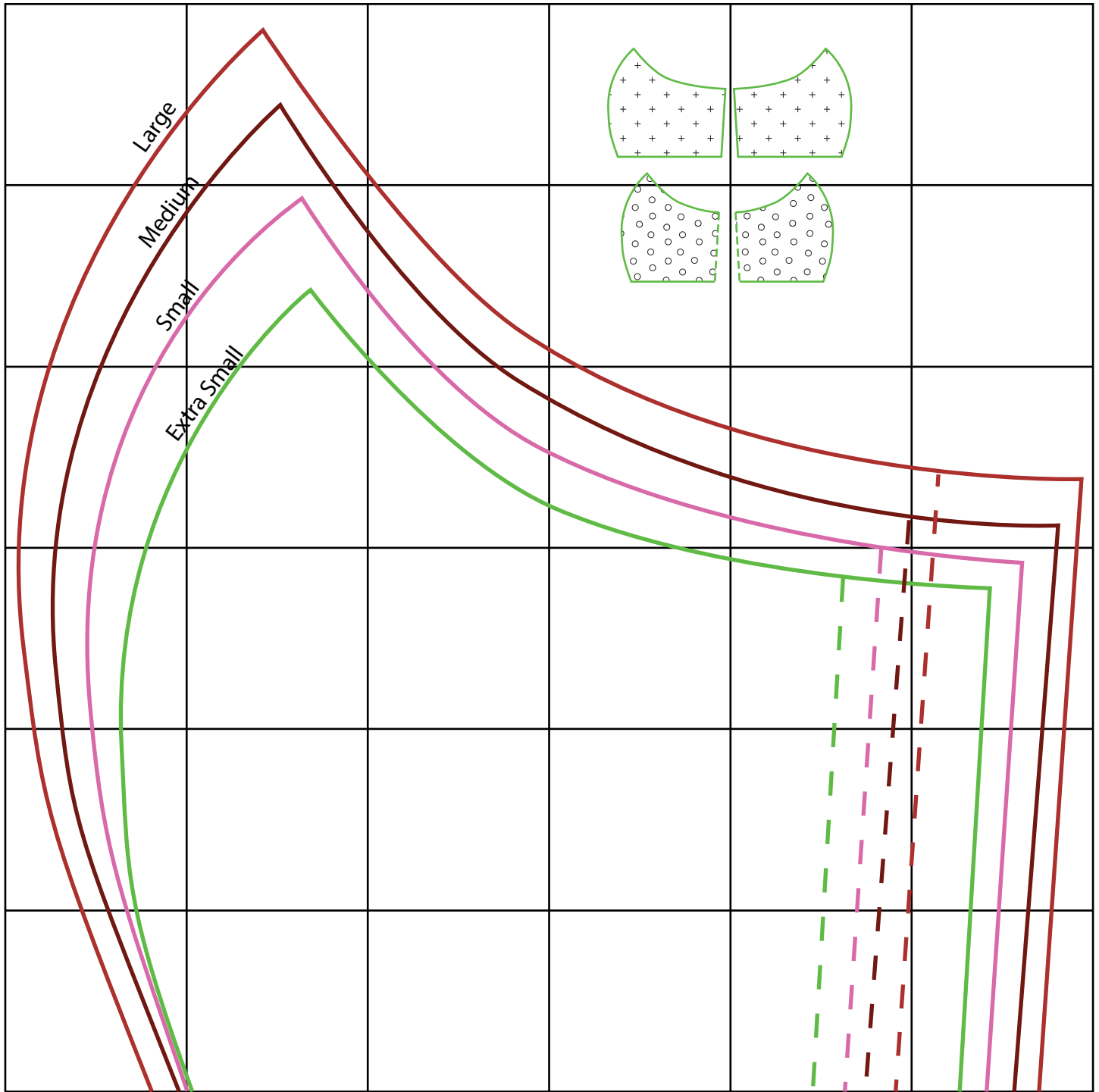
SIMPLE SEWING

SURGICAL FACE MASK PATTERN (REWASH)



WOODSTOCK.CAN
#SEW4SAFETY
#MASKS4ALL

2.5cm



2.5cm

**MEDIUM AND LARGE ARE ADULT SIZES
SMALL AND EXTRA SMALL ARE KID SIZES
PATTERN INCLUDES A 5 MM SEAM ALLOWANCE**

Cut 2 for Outer Fabric

Cut 2 for lining fabric (only up to dotted line)

If you dont have a printer, try tracing it using your computer as a lightbox OR you can use the grid as a guide to draw the mask template freehand.

Use a pencil and a ruler to draw a 6x6 grid, with a block size of 2.5cmx2.5cm.

Select the size you want and sketch it onto fairly stiff paper. (Cereal box cardboard also works well) If you dont have access to narrow elastic that will fit over the ears comfortably, thin hair ties can work well. Just remember to fold them into the edges before sewing them up (VIDEO TUTORIAL ON THE NEXT PAGE)



SEWING QUEEN

SURGICAL FACE MASK PATTERN (REWASH)



SUPPLIES:

100% Cotton fabric scraps (Need 1 light and 1 dark color fabric for visible contrast)

Sewing machine or serger

1 1/3yd or 48 inches Fabric or ribbon ties for head strap (bias tape, grosgrain ribbon NO satin ribbon!!)

3in wire (thinner gauge enough to bend and hold for nose piece. Can even use paperclips, twist ties or pipe cleaners! Make sure to bend ends in so the wire does not poke through fabric)

DIRECTIONS:

Step 1: Cut (2) of pattern A fabric right sides together. Cut (2) of pattern B fabric right sides together.

Step 2: Fold Pattern A fabric 1/4 inches from end (as shown on pattern) top stitch down.

Step 3: Fold Pattern B fabric 1/2 inches from end (as shown on pattern) top stitch down.

Step 4: With Pattern A fabric right sides together, sew curved seam to create the center of mask with 1/4 inches seam allowance with a straight stitch. Clip curved seam to allow seam to lay flat.

Step 5: With Pattern B fabric right sides together, sew curved seam to create the center of the mask with 1/4in seam allowance. Clip curved seam to allow seam to lay flat.

Step 6: Match Pattern A and B at middle seam (nest seams) and stitch with 1/4 inch seam allowance both layers together at top and bottom (leaving ends open). Pattern A WILL BE LONGER THAN Pattern B!

Step 7: Before turning right sides out, zig-zag stitch pattern A and B edges together at the nose of the mask (2 inch down from top point on both sides, 4 inches total). (Fig 1)

Step 8: Slide wire between 1/4 inch seam allowance and zig-zagged edge at nose point, bend slightly around the curve.

Step 9: Turn mask right side out using the side openings.

Step 10: Fold Pattern A (folded edge) down to meet Pattern B folded edge, top stitch Pattern A 1/4 inch from fold to form a tube end for fabric or ribbon ties.

Step 11: (Fig 2) If making fabric ties, cut 1.5 inch strips of fabric, fold lengthwise in half press with iron, fold edges of fabric to meet at middle center fold, press with iron (as indiated in diagram). Stitch folded fabric closed in middle with a zig zag stitch. Strips should finish at .375in wide and 48inches long.

Step 12: Slide 48in piece of fabric/ribbon through tube opening on both ends of mask (pattern A side) leaving head strap at top and ties at bottom of mask (as indicated in diagram.)

FABRIC/RIBBON TIE DIAGRAM

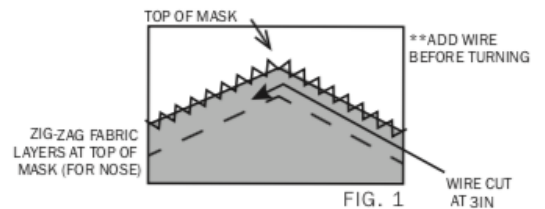
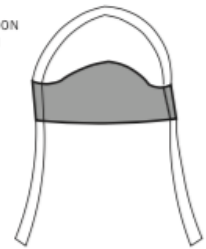


FIG. 2

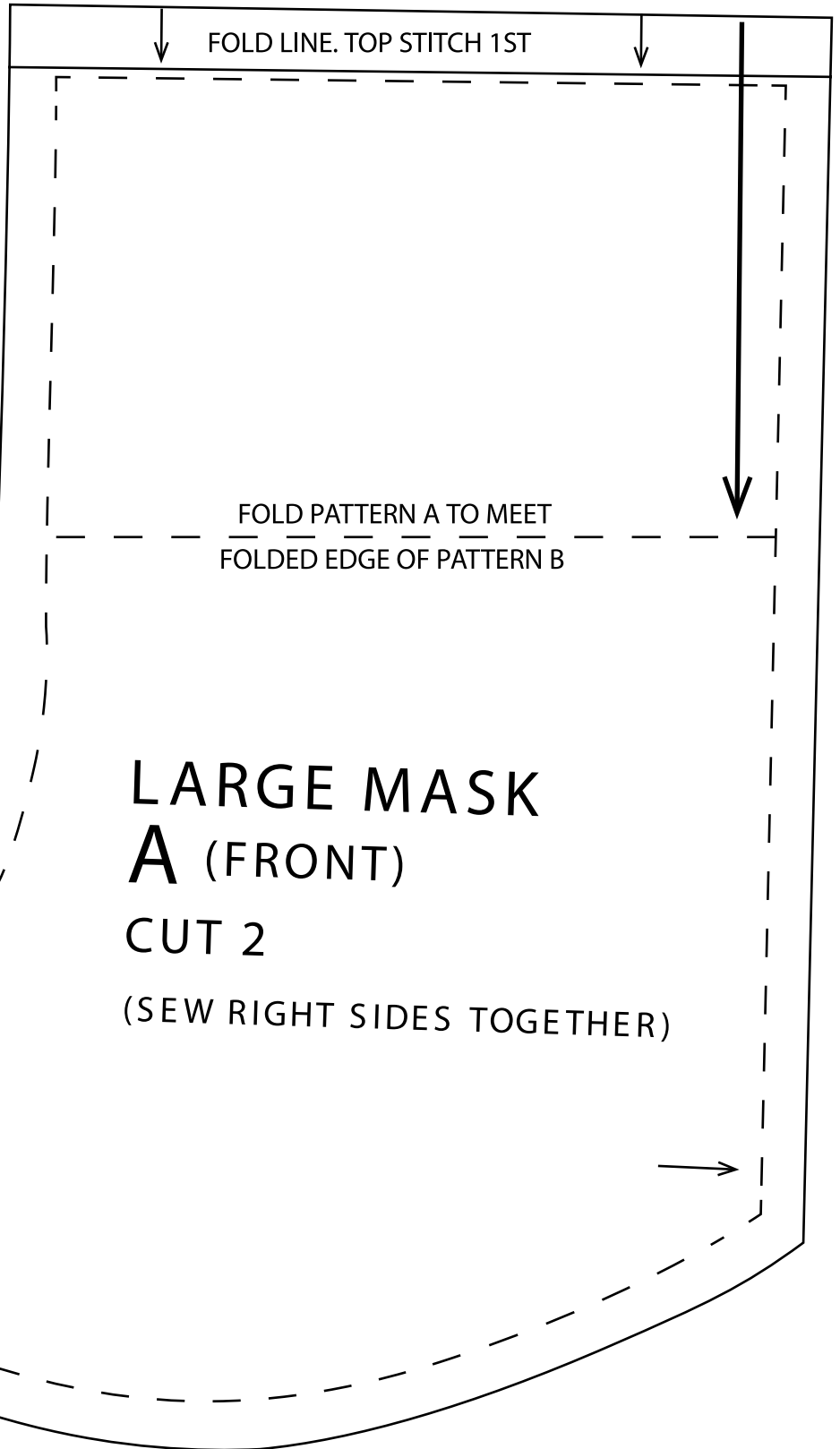
[CLICK HERE](#)



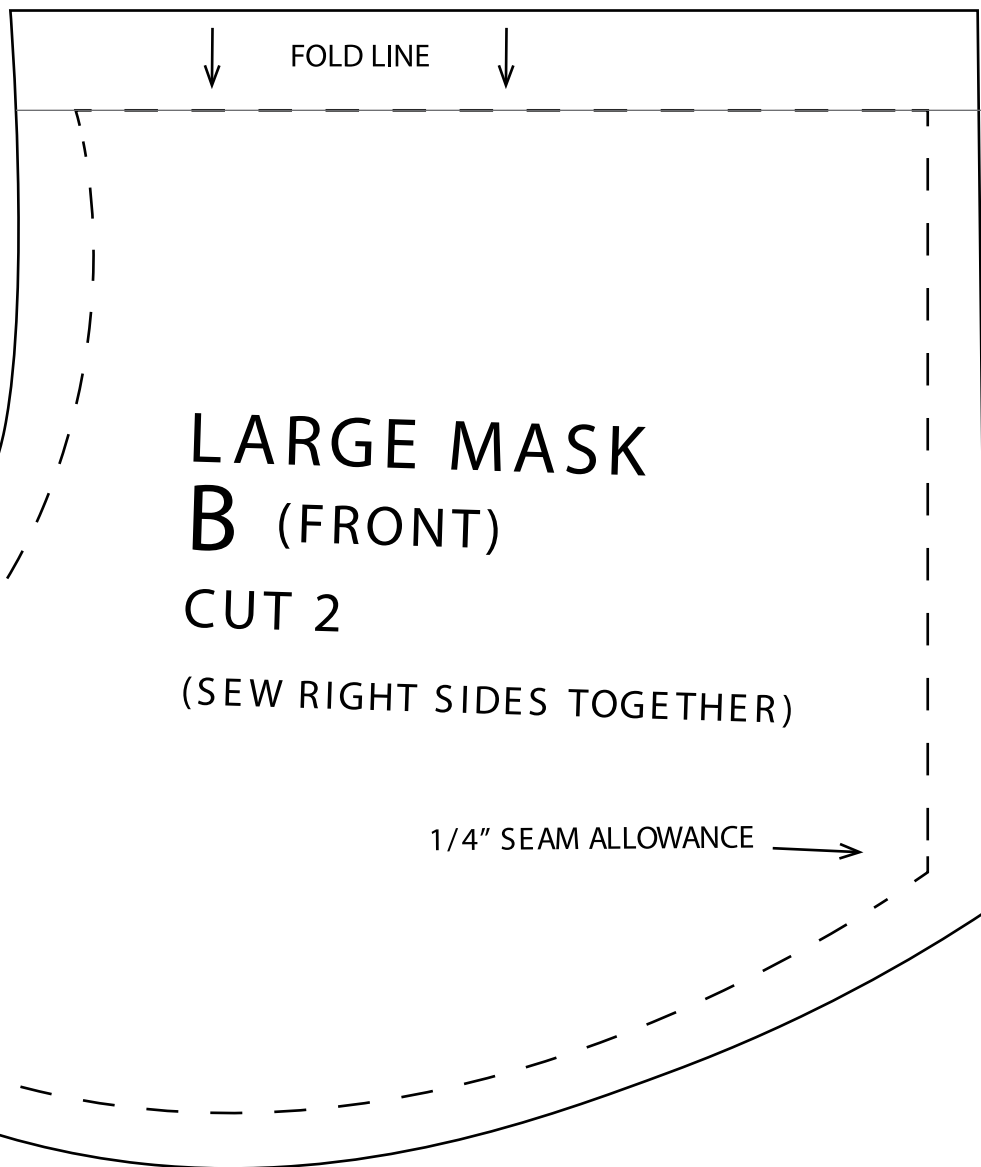
CLICK HERE TO WATCH A LIVE TUTORIAL VIDEO



MASK 2



MASK 2



GO QUEEN GO!

SHARE WITH US

We are all in this together share your photos, questions and stories using the following hashtags on Social Media

#SEWSISTAS #SEW4SAFETY #MASK4ALL



MASK 3



01 Take a piece of 100% pure cotton fabric and sterilize it properly for your safety. Cut the fabric in approximately 20x20 cm size



03 Now, make the even and larger folds of about 3cm in the remaining fabric from top to bottom.

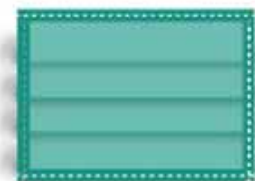


05 Now, sew the fabric vertically on the left and right sides so that the larger folds that you made in step 4 remain intact.

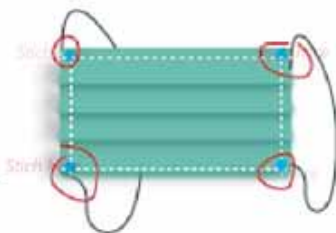
1.5cm



02 Now fold the upper and lower sides of the fabric to 1.5-2 cm and sew them both horizontally so that the folds become permanent.



04 Iron these folds so that they stay in place. Do not sew them horizontally as you did in step 3 because these folds would cover the area from your nose to chin and we would want it to remain adjustable according to our needs.



06 Cut the elastic in two equal pieces. Hold one piece of the elastic and sew its one side on the top left corner of the fabric. Sew the other side of this piece of elastic on the bottom left corner of the fabric. Repeat the same step for the other side and your mask will be ready to use.

Take a piece of 100% pure cotton fabric and sterilize it properly for your safety. Cut the fabric in approximately 17x20 cm size.

Now fold the upper and lower sides of the fabric to 1.5-2 cm and sew them both horizontally so that the folds become permanent.

Now, make the even and larger folds of about 3cm in the remaining fabric from top to bottom.

Iron these folds so that they stay in place. Do not sew them horizontally as you did in step 3 because these folds would cover the area from your nose to chin and we would want it to remain adjustable according to our needs.

Now, sew the fabric vertically on the left and right sides so that the larger folds that you made in step 4 remain intact.

Cut the elastic in two pieces according to your needs so that you can place them on your ears to hold your mask.

Hold one piece of the elastic and sew its one side on the top left corner of the fabric. Sew the other side of this piece of elastic on the bottom left corner of the fabric. Your mask is ready to be worn on one ear.

Sew the other piece of elastic on the same pattern on the right upper and lower corners of the fabric. Your mask will be ready for both ears.



SOCIAL MEDIA AND VISUAL SUPPORT TO LAUNCH YOUR GROUP AND GROW YOUR COMMUNITY

PLEASE ENTER YOUR OWN NUMBER AND NAME IN THESE SECTIONS. THESE ARE FOR SOCIAL MEDIA AND WHATSAPP. USE THEM TO GET DONATIONS AND RECRUIT VOLUNTEERS. USE WWW.CANVA.COM IF YOU ONLY HAVE YOUR PHONE (FREE APP)



WHATSAPP ICONS

Team Leaders can use these to navigate there conversations better.

GROUP ICON

MANAGEMENT

DELIVERY AND VOLUNTEERS



JOIN THE GLOBAL MOVEMENT ON:
www.maskforall.net

[CLICK HERE](#)





WOODSTOCK.CAN

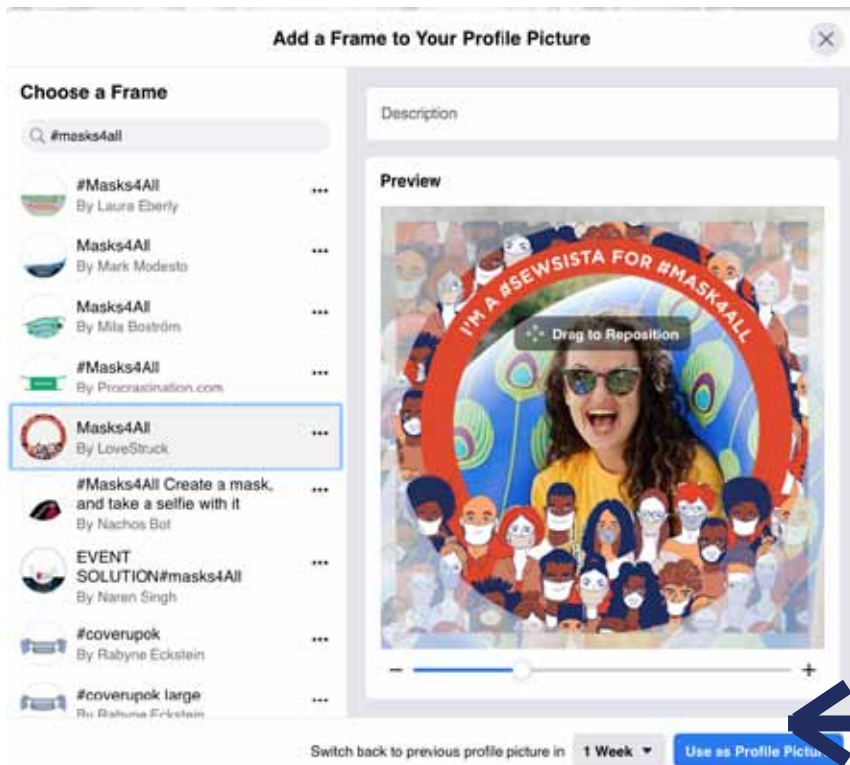
#SEW4SAFETY

#MASKS4ALL

**SHARE YOUR TIPS, IDEAS AND PICTURES
ONLINE WITH OUR COMMUNITY!**

**HASHTAGS TO BE USED
ON SOCIAL MEDIA**

#MASKS4ALL
#SEWSISTAS
#SEW4SAFETY



**DO YOU HAVE A #SEWSISTA?
Share this document with
them and let us try and make a
difference together.**

Let's all create a safe space for people to stitch, or bitch or just bond together. This is a community project is created to empower and connect people across Africa.

**Thanks for SHARING YOUR
SKILLS AND WITH THAT
SHARING YOUR LOVE!**

We Created Photoframes on Facebook. Update your cover images and REPRESENT!

**SEARCH
#MASKS4ALL
LoveStruck**



**JOIN THE GLOBAL MOVEMENT ON:
www.maskforall.net**

[CLICK HERE](#)

